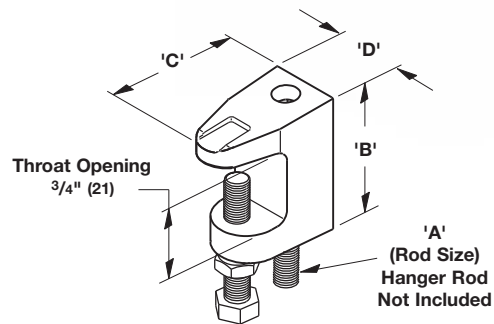


Beam Clamp



Material: Ductile Iron

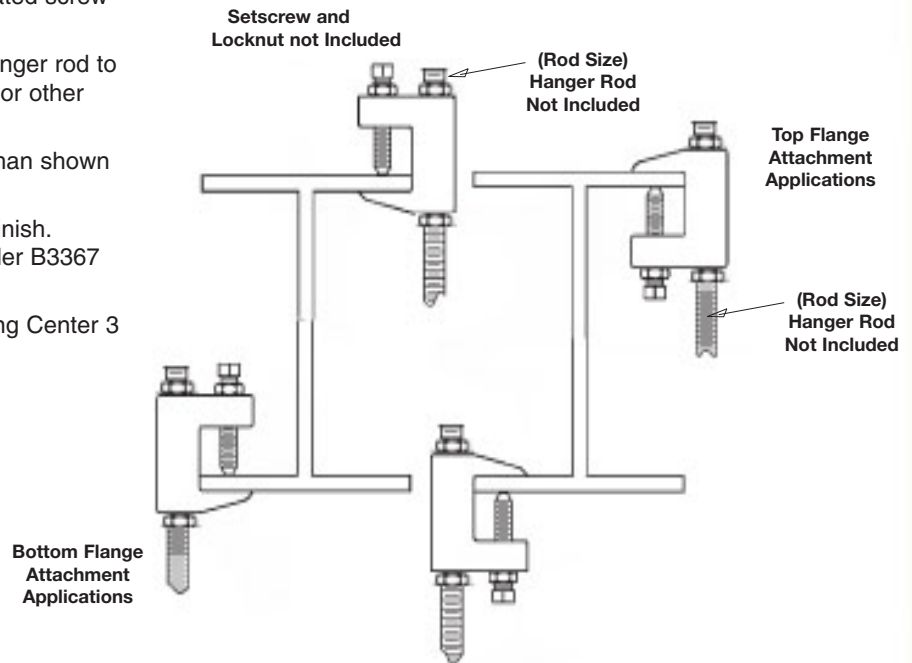
Standard Finish: Plain or Electro-Plated screw with Dipped Galvanized clamp

Service: Designed for attaching a hanger rod to the top or bottom flange of a bar joist or other structural shapes.

Note: Installation of C-Clamp other than shown below is not recommended.

Ordering: Specify part number and finish. When Retaining Strap is required, order B3367 separately. See page 02.

Approvals: Quality Assurance & Testing Center 3
K3-1782C



Model. BA-BA001 (Wide Jaw Reversible C-Clamp)

Part No.	Rod Size 'A'	'B'		'C'		'D'		Design Load		Maximum Iron Pipe Size Per UL		Wt./C	
								Lbs.	kN			Lbs.	kg
BA-BC001-1/2	1/2"-13	2"	(50.8)	2 1/11"	(53.3)	1 1/16"	(26.9)	500	(2.22)	4"	(100)	54	(24.5)

All dimensions in charts and on drawings are in inches. Dimensions shown in parentheses are in millimeters unless otherwise specified.



**BAO AN
ENGINEERING**

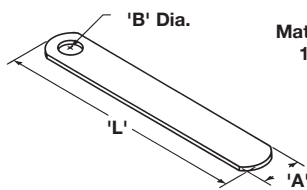
HEAD OFFICE:
60B Binh Son Industrial Zone
Long Thanh - Dong Nai Province
Tel : 0612 242 794
0613 534 067
Fax: 0613 534 067

BRANCH OFFICE:
10/2 Dong Nai Str - Ward 2
Tan Binh Dist - HCM City
Tel : 84 8 35 470 045
Fax: 84 8 35 470 021
Email : baoan@baoanengineering.com

Retaining Straps

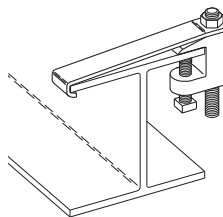
Retaining Straps

Part No.	For Use With	'A'		'B'		Wt./C for Length 'L' of							
						6" (152.4)		8" (203.2)		10" (254.0)		12" (304.8)	
						Lbs.	kg	Lbs.	kg	Lbs.	kg	Lbs.	kg
BA-RS1-1/2	BA-BC001- 1/2	1 1/4"	(31.7)	9/16"	(14.3)	25	(11.3)	34	(15.4)	43	(19.5)	60	(27.2)



Material Thickness
11 Gauge (3.0)

Note:
Requires
field forming
on beam.



Material: Steel

Standard Finish: Pre-Galvanized

Service: Designed for use with BA-BA001 C-Clamps

Ordering: Specify part number, length 'L', (add 2" (50.8) minimum to flange width), and finish.

